

2,407 SF AVAILABLE

**END CAP UNIT**

# MERIDIAN CONCOURSE CENTER

SUITE 220 | 4600 140TH AVE N | CLEARWATER, FL 33762



**SPACE AVAILABLE Q2 2025**



# BUILDING HIGHLIGHTS

**± 1,200 SF**  
**OFFICE**

**2.6 / 1,000**  
**PARKING RATIO**

**± 1,200 SF**  
**WAREHOUSE**

**Q2 2025**  
**AVAILABLE**

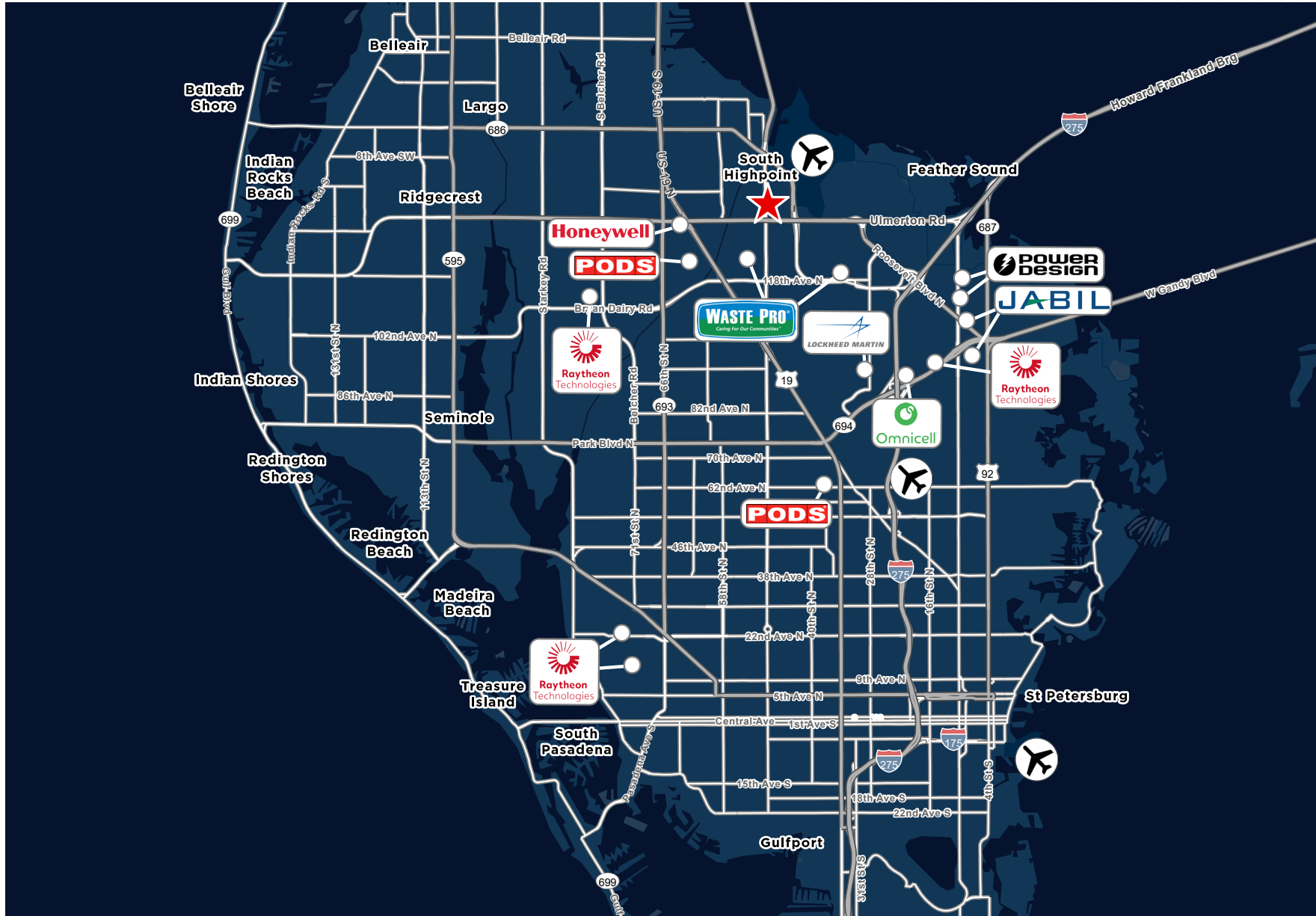
**Air Conditioning:** 100% AC

**Sprinkler Type:** Wet System

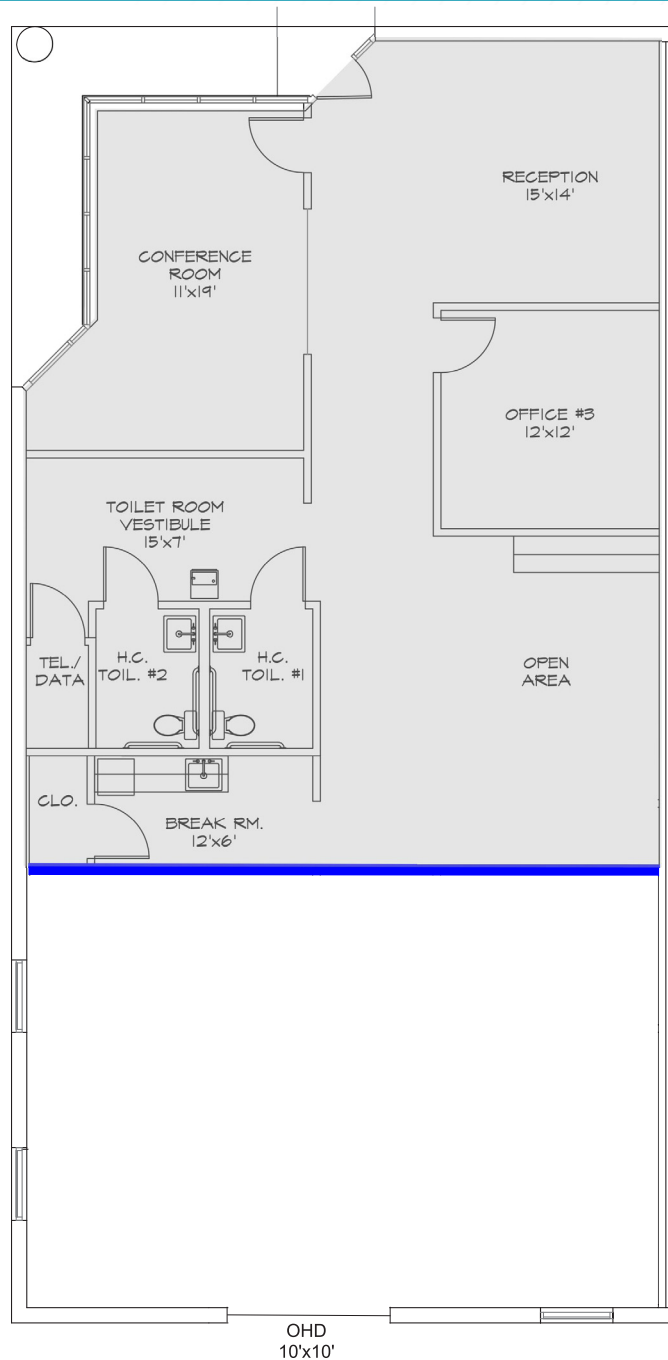
**Grade Level Doors:** One (1) 10' x 10' Grade Level Door



# THE LOCATION



# FLOOR PLAN



FOR MORE INFORMATION, PLEASE CONTACT:

**John Jackson**  
Mobile: +1 727 643 7316  
[john.jackson@cushwake.com](mailto:john.jackson@cushwake.com)

**JT Faircloth**  
Mobile: +1 813-833-3242  
[jt.faircloth@cushwake.com](mailto:jt.faircloth@cushwake.com)

**Casey Perry**  
Mobile: +1 813 233 6564  
[casey.g.perry@cushwake.com](mailto:casey.g.perry@cushwake.com)



One Tampa City Center  
Suite 3300  
Tampa, Florida 33602 | USA

©2025 Cushman & Wakefield. All rights reserved. The information contained in this communication is strictly confidential. This information has been obtained from sources believed to be reliable but has not been verified. NO WARRANTY OR REPRESENTATION, EXPRESS OR IMPLIED, IS MADE AS TO THE CONDITION OF THE PROPERTY (OR PROPERTIES) REFERENCED HEREIN OR AS TO THE ACCURACY OR COMPLETENESS OF THE INFORMATION CONTAINED HEREIN, AND SAME IS SUBMITTED SUBJECT TO ERRORS, OMISSIONS, CHANGE OF PRICE, RENTAL OR OTHER CONDITIONS, WITHDRAWAL WITHOUT NOTICE, AND TO ANY SPECIAL LISTING CONDITIONS IMPOSED BY THE PROPERTY OWNER(S). ANY PROJECTIONS, OPINIONS OR ESTIMATES ARE SUBJECT TO UNCERTAINTY AND DO NOT SIGNIFY CURRENT OR FUTURE PROPERTY PERFORMANCE.